



u-blox AG  
Zürcherstrasse 68  
8800 Thalwil  
Switzerland  
[www.u-blox.com](http://www.u-blox.com)

Phone +41 1722 7444  
Fax +41 1722 7447  
[info@u-blox.com](mailto:info@u-blox.com)

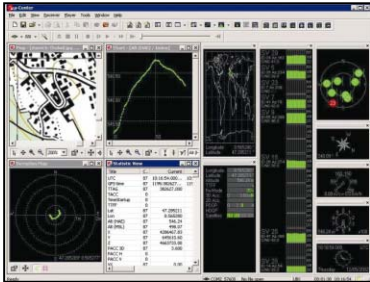
## Press Release

# **u-center ANTARIS<sup>®</sup> Edition - Evaluation and Visualization Tool for GPS Receivers.**

**For immediate release**

**Thalwil, Switzerland, 22. October 2003 - u-blox, an innovator in GPS-based positioning technology, presents the u-center ANTARIS® Edition, a versatile support tool for evaluating, configuring and testing GPS receivers through all project phases of OEM product development.**

u-center AE is a powerful and easy-to-use software tool for integrating u-blox ANTARIS® GPS receivers such as the TIM-LP/-LF/-LC family in end products throughout all project phases. Its main features Visualization, Configuration and Data Recording are key enablers for in-depth evaluation, optimum configuration setting, effective design verification and production testing. u-center AE uses the NMEA and UBX binary protocol to communicate with the GPS receivers.



u-blox u-center ANTARIS® Edition (AE)

Visualization: u-center AE visualizes received GPS and sensor-based dead reckoning messages over a wide band of abstraction levels in real time: From raw binary messages, output of structured information to high level graphical illustrations. Tables, two-dimensional charts and histograms can be generated from more than 300 selectable parameters. Statistics are calculated automatically. A deviation map illustrates the GPS position with respect to the true surveyed position. A sky view visualizes the received signal strength (C/No) with respect to the location of the satellite in the sky. This feature is suitable for measuring antenna characteristics and detecting sky obstructions.

Finally, a cockpit panel provides real-time instruments for time, altitude, speed, heading and satellite information and constellation. u-center AE supports comparative tests of multiple GPS receivers by multiple instantiations running simultaneously. Easy export capabilities to standard office applications are provided.

Configuration: u-center AE provides a wide spectrum of configuration parameters, e.g. navigation filters, message set up and update rates, which can be adjusted and temporarily activated or permanently stored in the Flash EPROM in the GPS receiver. The parameters can be easily exported for automatic product configuration during serial production.

Data Recording: u-center AE provides a data recording into a log file, which is as easy to operate as a tape recorder. Data recording is convenient for road tests. When back in the office, the data can be played back interactively at different speeds, analyzed and the driven route illustrated on a scanned roadmap.

u-center AE is free of charge and downloadable from the u-blox web site. It runs on personal computers under Windows NT / 2000 / XP.

u-blox is a company operating internationally with headquarters in Switzerland with subsidiaries in Germany, UK, USA and Hong Kong. Since its foundation in 1997, u-blox develops and markets leading Global Positioning System (GPS) chip sets and GPS receiver products. For further information and contacts, please refer to our homepage [www.u-blox.com](http://www.u-blox.com) .

-end-

## Press Contacts

u-blox AG  
Georg Zur Bonsen , Product Management  
phone: +41 (1) 722 74 44, e-mail: [georg.zurbonsen@u-blox.com](mailto:georg.zurbonsen@u-blox.com)

u-blox AG  
Manuela Vujevic, Marketing Communications  
phone: +41 (1) 722 74 44, e-mail: [manuela.vujevic@u-blox.com](mailto:manuela.vujevic@u-blox.com)